

## NEW SEKONIC L-758DR/L-758D/L-758CINE DIGITALMASTER

### GENERAL INFORMATION:

Digital photography offers a new opportunity for creative expression and photographic control. However, digital exposure control remains one of the most critical challenges that continue to handicap photographer's creative freedom. Today photographers recognize the need to control digital exposure and rely on the light meter to ensure repeatable and accurate exposures every time. On location, in the studio or on a movie set, Sekonic light meters are the prevalent tools most used in the photographic and cinematography industries.



### NEW Sekonic L-758DR DIGITALMASTER Exposure Profiling and Wireless Triggering Light Meter

From its inception, the Sekonic L-758DR/L-758D/L-758CINE DIGITALMASTER light meter have been designed to offer the greatest digital exposure control, accuracy and repeatability. The L-758 series are the world's first multi-function light meter that can be calibrated to match the sensitivity of a digital cameras sensor at all ISO settings, flash/ambient or file format characteristics. In addition, the camera sensor's dynamic range can also be set and stored for later recall and display. Using the USB transfer cable and Sekonic Data Transfer Software, all camera exposure profile data is uploaded from a PC or computer to the L-758 series. Up to three different camera exposure profiles can be stored and quickly recalled when switch from one camera to another. With its exposure latitude warning indicators and adjustable Mid-Tone settings, the L-758 series puts the power of optimum image tonality and exposure control in the palm of your hands.

The L-758DR also includes a PocketWizard wireless triggering radio transmitter built inside (optional for L-758D/758CINE), which is easier and more convenient to use. Similar to the popular Dualmaster L-558 series, the L-758 series offers features such as flash analyzing, spot/incident measuring modes, calibration and exposure compensation, Selective Quad Triggering and measuring, Custom Settings and much more. Created for digital photography, the L-758 series are the ultimate digital and film exposure control light meters.

**\*L-758DR---Radio triggering module built-in for all over the world (US/Canada and CE frequency)**

**\*L-758D---Without Radio triggering module version only for CE frequency and Japan**

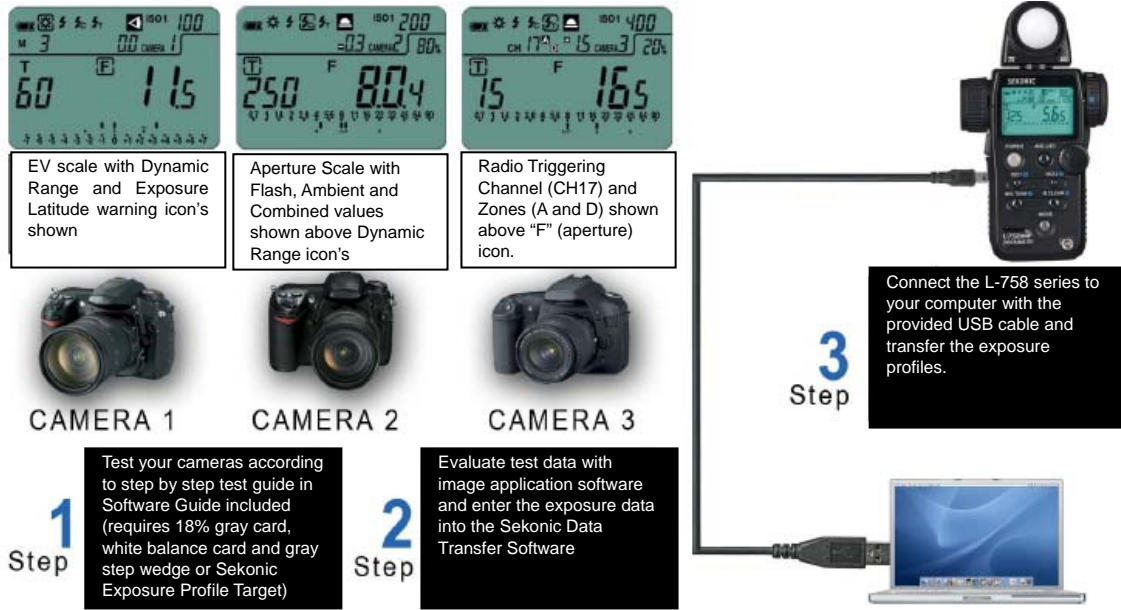
**\*L-758CINE---Additional CINE feature without radio triggering module for all over the world**

# SEKONIC

## FEATURES:

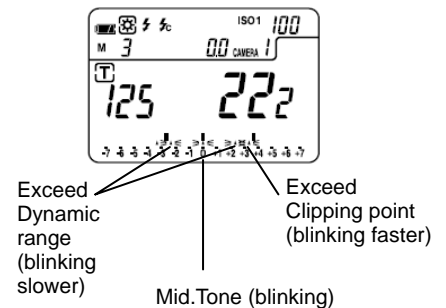
### 1) Digital Camera Exposure Profiling

Up to three digital camera exposure profiles can be stored and recalled. Setting the L-758 series to perfectly match specific digital cameras sensitivity is quickly done by selecting one of the camera memory modes (camera 1, camera 2 or camera 3).



### 2) Exposure Latitude Warning

Once the L-758 series is programmed for a camera exposure profile, it will display the exposure range (Dynamic range and Clipping point) for that camera. Warning indicators will flash on the analog scale if a measured Highlight or Shadow has exceeded the dynamic range or clipping point of that particular camera.



### 3) Sekonic Data Transfer Software

Compatible with both Windows and MAC computers, Sekonic's Data Transfer Software automatically calculates the entered test data from your digital camera and creates a compensation data table. The data table is uploaded to the L-758 series via the provided USB transfer cable and the L-758 series is automatically calibrated for the specific digital camera sensor and camera settings.



# SEKONIC

## 4) Wireless Flash Triggering (L-758DR : built-in, L-758D/CINE : optional)

The L-758DR DIGITALMASTER has a PocketWizard compatible radio transmitter built-in (optional for L-758D/758CINE), providing complete wireless triggering with all PocketWizard and PocketWizard Wireless Freedom products.

The L-758 series continuously displays the radio channel and Quad Triggering Zones. Dedicated Quad Triggering keys provide fast and convenience selection of which flash triggers on the fly. The L-758 series can trigger flash units (or camera) from 100 feet away

## 5) Memory Mode

Up to nine readings can be memorized in incident or spot metering modes simultaneously in both Aperture Priority and Shutter Priority Modes. Contrast evaluation and averaging is possible in both modes. Pressing the memory button after taking a light reading sets a mark (icon) on the analog f/stop scale at the bottom of the LCD panel. A numeric value appears next to the memory symbol "M" on the display as a reminder of how many measurements have been stored. When switching in the same mode from spot to incident, memory readings are retained. The memory function of the L-758DR, L-758D and L-758CINE DIGITALMASTER provides the photographer with an effective way of retaining and analyzing shadow, mid-tone and highlight exposure readings.

## 6) One-degree Spot with Digital Display

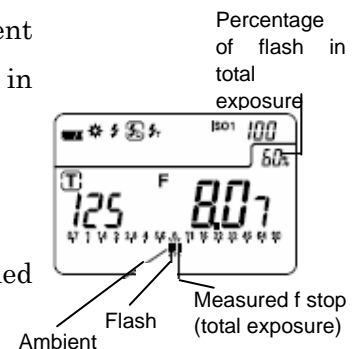
The rectangular 1° spot viewfinder displays f-stops, shutter speed, percentage of flash and much more with an EL (Electronic-Luminescent) digital display.



## 7) Analyzing Function

All flash measuring modes simultaneously provide flash and ambient exposure data. Now you can evaluate flash and ambient exposures in three convenient ways:

- i) Combined readings of flash and ambient
- ii) Percentage of flash in the total exposure
- iii) Simultaneous display of flash, ambient and combined readings on the analog scale.

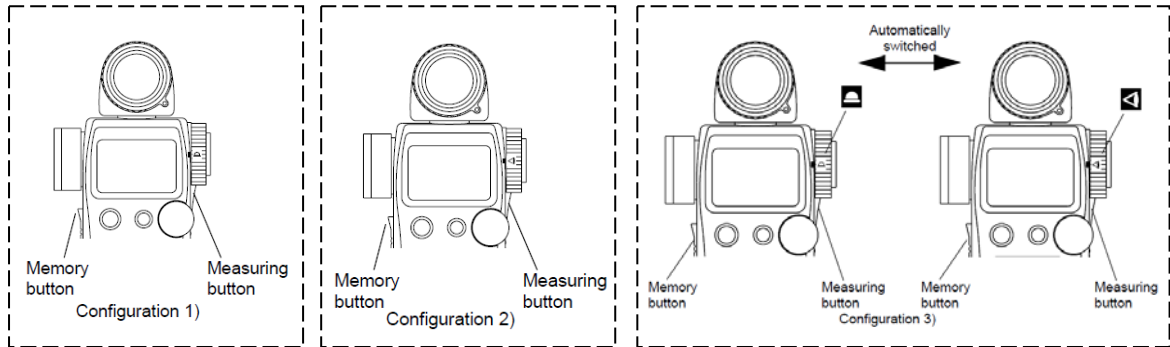


# SEKONIC

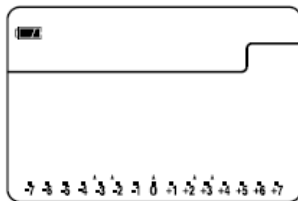
## 8) Custom Setting Function

Frequently selected custom functions are incorporated in the L-758 Series DIGITALMASTER, and provide a quick and easy setup of individual meter preference.

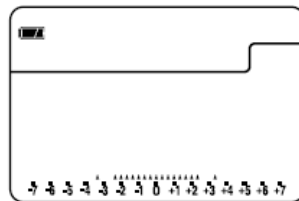
- Full, 1/2 and 1/3-step readings in both shutter speed and aperture
- Memory and Measuring button are switchable



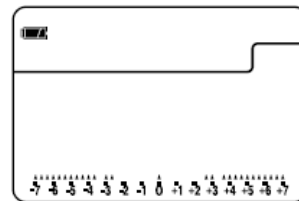
- Exposure and filter compensation, meter calibration
- Jog wheel (clockwise direction) increase or decrease value
- Compensation +/- preference additive or subtractive setting
- Three display choices for Dynamic range and Clipping point icons.



Five point



Inside Range



Outside Range

and much more...

## 9) Others

Sekonic unique features of “All-Weather Design”, “Retracting Lumisphere”, “Auto Back light”, etc. are available to L-758 series as well.

## The L-758CINE special features



Designed especially for today's cinematographer and videographer, the L-558CINE incorporates all the popular features of the L-558, PLUS...

- Shutter angle settings from 1° to 10° (in 1° steps), 15° to 270° (in 5° steps) as well as, 12°, 17°, 22°, 144° and 172°,
- Cine speed (fps) 1 thru 1000,
- Lux 0.63 to 190,000,
- Foot-Candle 0.10 to 180,000,
- Cd/m<sup>2</sup> 0.25 to 190,000,
- Foot-Lambert 0.07 to 190,000,
- Preset filter compensation values (including Kodak® Wratten filter number)

Ideally suited for motion picture, video, theatre, stage, museum and industrial lighting applications.